

Custom Speedo Face

By Webslinger



Items needed

- 1 Small cross tipped or Phillips screw driver
- 1 flat tipped screwdriver
- #4 metric allen wrench
- Dremel tool w/cutoff wheel

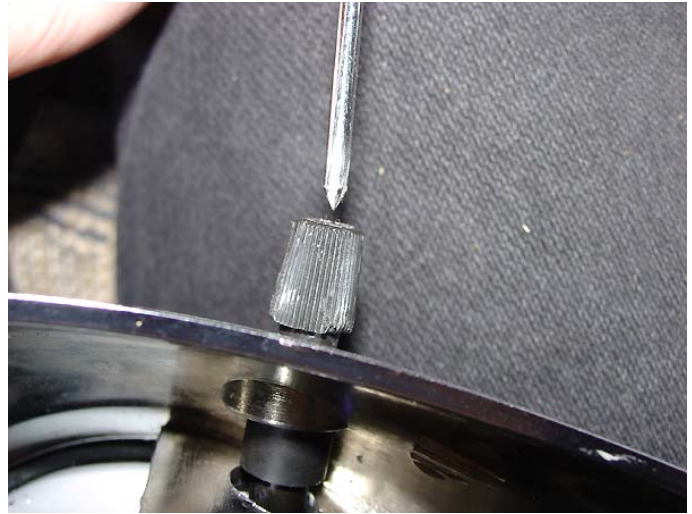


Open your speedo

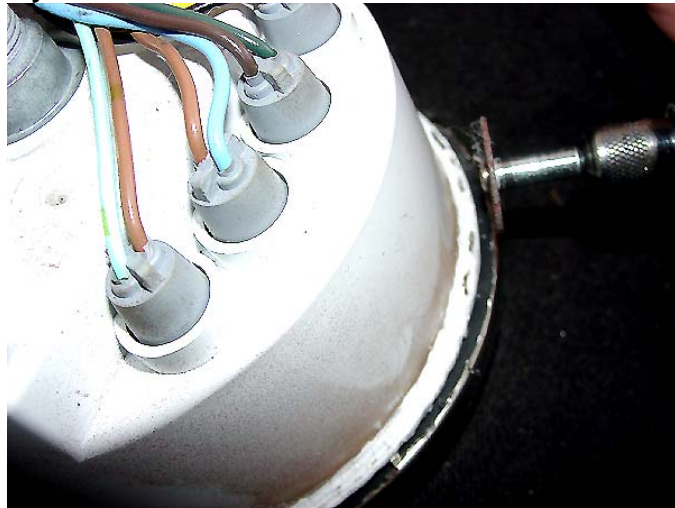


Remove the speedometer from it's housing

The trip meter knob is attached with a #2 metric Philips screw down the center of the knob



If you use a dremel tool.....



Use a dremel cutoff wheel to remove the bezel ring – cut all the way around – “Except” for enough to leave a tab for re-installation – this metal is very thin.... Usually all you have to do is score it well and the use pliers to bend it off



“Except” for enough to leave a tab for re-installation



If you don't have a dremel

First thing you need is a small but sturdy electrical screwdriver to start prying at the chrome surround of the speedo housing.



... gently place the screwdriver under the edge of the chrome rim and start prying up the edge working towards yourself as this seems to be easier, take it slow and be patient.



.. Continue to work your way around the rim repeating this until the edge is almost vertical, this may take a little time but as you work the rim will loosen enough to allow the screwdriver between the chrome ring and the speedo housing, making it easier to straighten out the rim.



..... you will be starting to get the hang of it by now and the rim will become easier to work, it will be worth it as there is less damage to the chrome surround than using the dremmel, even though you may be tempted to reach for it.



step 5.... at this point there should be enough play in the rim to enable you to gently pry the housing free from the rim, taking care not to cause any flex in the glass.



What you should have now is the speedo separated from the rim.



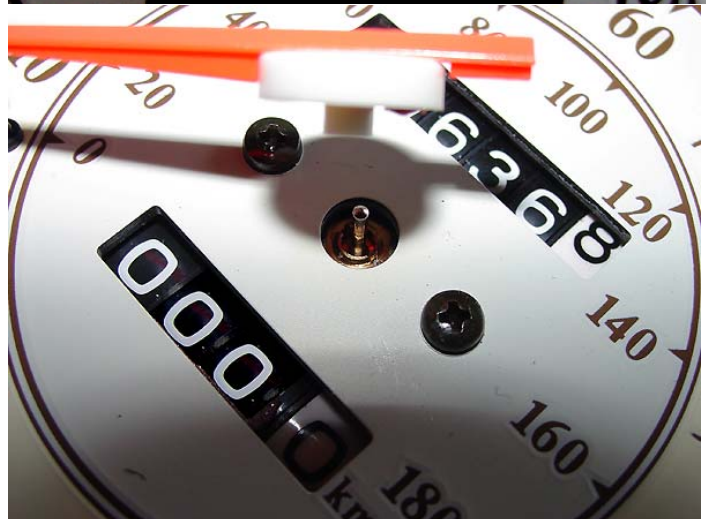
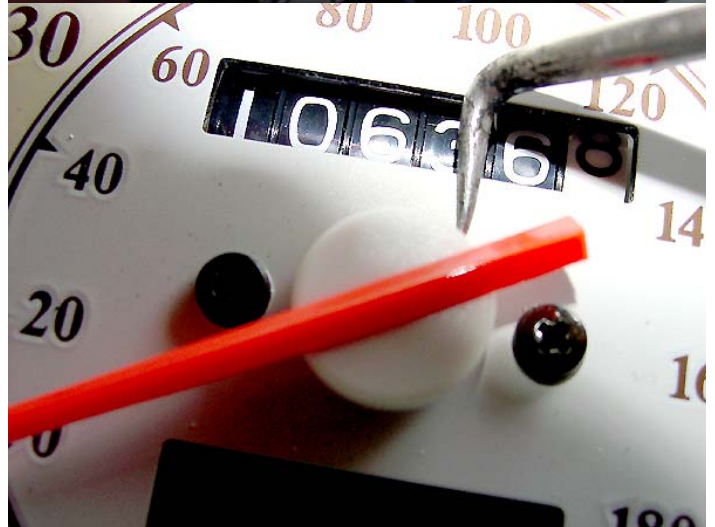
Be careful **not** to touch the inside of the glass there is a fine film of oil on it – if you touch it your prints are there from now on – (else you'll have to clean the glass with glass cleaner)

Remove the speedo needle

First lift the tip over the small plastic stop at zero on the dial and let it rest below the stop.

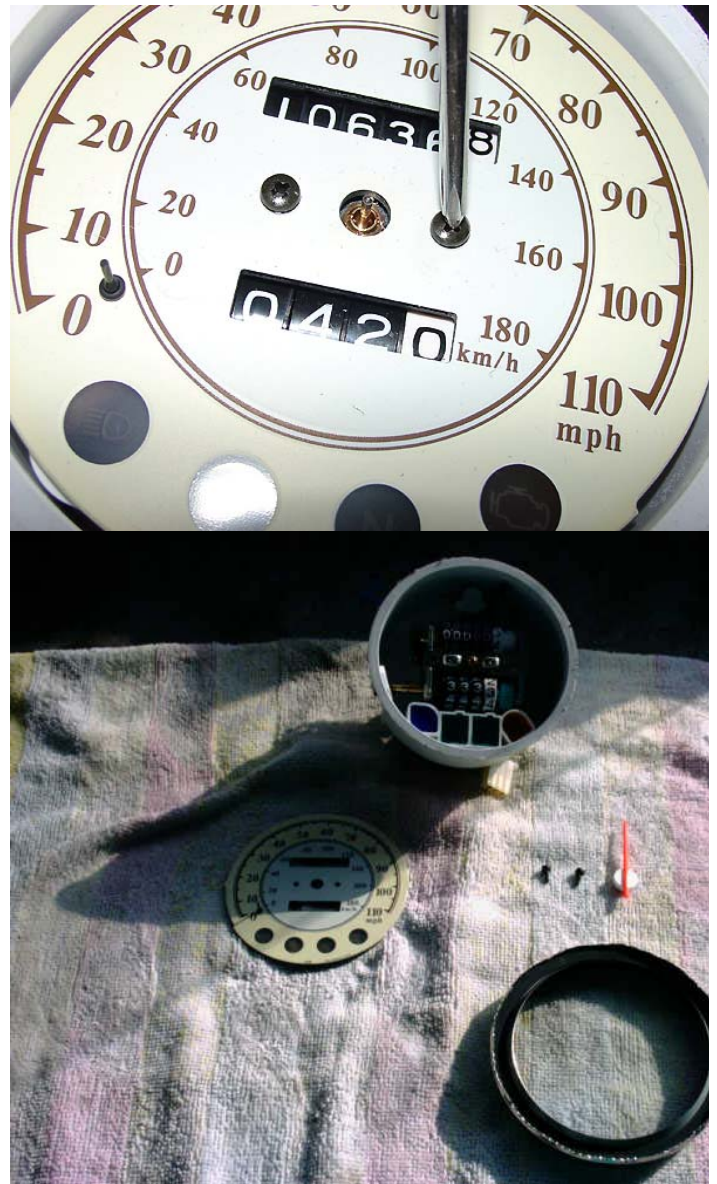
IMPORTANT: make special note as to where the needle is located at rest..... it's essential to replace it in as close to the exact position later

Using a chip puller, fork or something to carefully pull straight up on the needle until it pops off. Or use something you can pry up from underneath.....Take care not to wiggle it at all. Just pull straight up firmly. (The center metal shaft may come out with the needle. This is ok, just remove it from the needle and push it back into the center hole.



Then use a small Philips screwdriver to remove the dial

Remove the plastic needle stop from the dial – careful don't loose it...



Replace the needle stop



If the hole is slightly too large – try spreading the plastic post - a dab of glue – Elmers - Super Glue – anything will work to get it snug

Place the new dial in the housing



And replace the dial screws



Replace your speedo needle – in the approximately the exact position you removed it from...(as close as you can get).... If you don't the speedo will not read correctly

I've found the right position to usually be close to the first speedo light



Then use your fingers to lift it back over the stop so that it rest at 0 on the dial



Replace your lens and bend the tabs over to seal it shut

(Some channel lock pliers with tape over the teeth

I've had no issues with moisture – and I live in Seattle.....(LOL)

works real well)....

Then re-assemble the housing in the reverse order
that you took it apart



